

Power supply

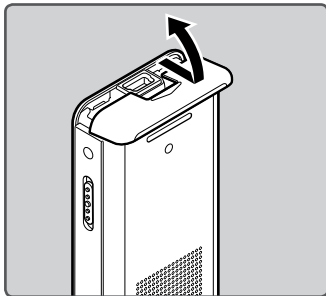
Inserting batteries

This recorder can be used with either Ni-MH Rechargeable Batteries or AAA Alkaline Batteries.

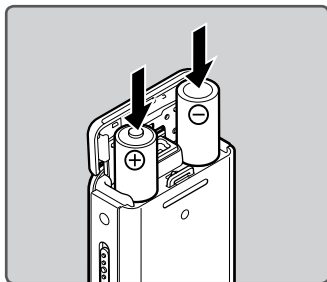


- When charging with the recorder, be sure to use the supplied Ni-MH rechargeable batteries (BR404).
- The supplied rechargeable batteries are not fully charged. Before using the recorder or after long periods of disuse, it is recommended that you continuously charge them until full (see P.17).

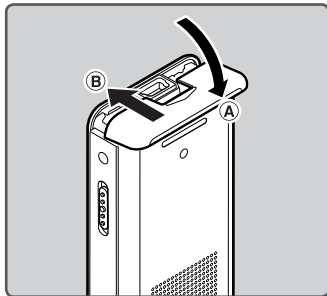
- 1** Lightly press down on the arrow and slide the battery cover open.



- 2** Insert the batteries, observing the correct \oplus and \ominus polarities.



- 3** Close the battery cover completely by pressing to the direction **(A)**, then sliding to the direction **(B)**.



1

Power supply